

ETONS

— OF BATH —

CLASSICALLY INSPIRED INTERIORS



Hallway | Georgian Rectory

ETONS

— OF BATH —

ETONS OF BATH, founded in 2010 by interior designer Sarah Latham, specialises in interior design for Georgian houses and hotels nationwide. We are the UK's only interior design practice with a focus on Georgian and Regency properties for private, public or leisure use.

Our unique skillset and team of twelve designers and project managers ensures that classic features, architecture, art and materials are retained whilst modernising the look, feel, layout and design to turn heads, adapt to modern living and add value.

Our main Studio and Showroom is in Bath but we work nationally to undertake Georgian interior design projects large and small. In turn, we provide full scale interior design, procurement, sourcing and project management wrapped up in specialist and friendly professional Georgian property advice.

Our team of experienced Georgian interior designers and project managers has worked on a vast array of Georgian and Regency period properties for a multitude of clients nationally. Our aim is to bring out the best in each house, hotel or country estate to make it more valuable, more beautiful and more practical.



Sarah Latham, Founder and Creative Director



Dining Room | Georgian Town House



Sarah Latham | Founder and Creative Director

HOW WE WORK

FULL INTERIOR DESIGN

Our full interior design service extends from design concepts to procurement and implementation for private residences and hospitality venues.

SERVICES INCLUDE:

- Design concepts
- Interior architecture
- Liaison on listing and planning
- Room layouts
- Lighting and electrical plans & specifications
- Audio-visual and security systems
- Lighting design and specification
- Furniture, re-upholstery and soft furnishings
- Shutters, hand-finished blinds and curtains
- Bespoke joinery, Georgian doors, windows and fireplaces
- New and reclaimed flooring
- Wallcoverings and finishes including bespoke
- Art and accessories
- Introduction and project management of trades

DESIGN PROCESS

Typically, as part of the design phase, we would produce the following:

- Design concepts
- Scale plans and elevations
- Space planning options
- Electrical plans
- Specific digital design scheme boards containing imagery of proposed furniture, lighting, style of window dressing and art as well as fabric, wall covering and flooring samples
- Detailed inventory of costs
- Project Management and timelines



HOTELS

The use of Georgian properties for hotel and leisure use is widespread in the UK due to the stunning façade and internal proportions of the buildings themselves.

Etons of Bath works closely with hotel owners to renovate, reinvigorate and refurbish hotels within Georgian and Regency buildings. We understand how to combine standout interiors with budget parameters while working within current regulations.





PRIVATE RESIDENCES

Etons of Bath understands Georgian properties, their architecture and historical context. We respectfully work with the period features of each property to enhance the look for both traditional and contemporary interiors, resulting in elegant comfortable homes for everyday living. We are well versed in working with all interior tastes from classical through to more contemporary – but always in cohesion and sympathy with Georgian internal spaces, light and architecture.

Bedroom | Georgian Rectory



Entrance Hall | Georgian Country House



Georgian Town House | Drawing Room



Regency House | Dressing Room







Joinery, storage and dressing rooms



RECENT PROJECTS

Etons of Bath works on a vast array of residential and hotel projects of all shapes and sizes. However, they all have one aspect in common: a desire to blend Georgian architecture and proportions with exciting, classic and luxurious design. We'd be happy to talk through any of our projects and show you how our design and project management process works. Here's what we've been doing in the last year:

- 30 en-suite bedrooms for Georgian town house hotel with Michelin star restaurant
- Design and project management of 4000 sq ft Georgian Manor House in Northumberland with five bedrooms and internal swimming pool & spa
- Four new bathrooms and bespoke dressing room in Georgian country house built in 1709
- Georgian Country Estate restoration in Oxfordshire
- Redesign of 9000 sq ft Georgian House in Bristol with 30 rooms to create a luxury city residence



Contemporary Sitting Room
Georgian Conversion

CASE STUDY: GEORGIAN MANOR HOUSE

The owners of a Georgian Manor asked us to remodel, extend and modernise their house whilst retaining its key Georgian features and proportions.

We designed and managed the whole house to deliver the scope and scale for a truly stunning family home. Here are a few facts to show what Etons of Bath delivered and some of the numbers involved:

2 clients in one – we understand that couples can have different approaches and styles which we need to listen to, find a common ground and incorporate into our designs

30 years – the length of time since the property had last been refurbished

5 designers – projects of this scale need a lot of manpower and teams big enough for the task

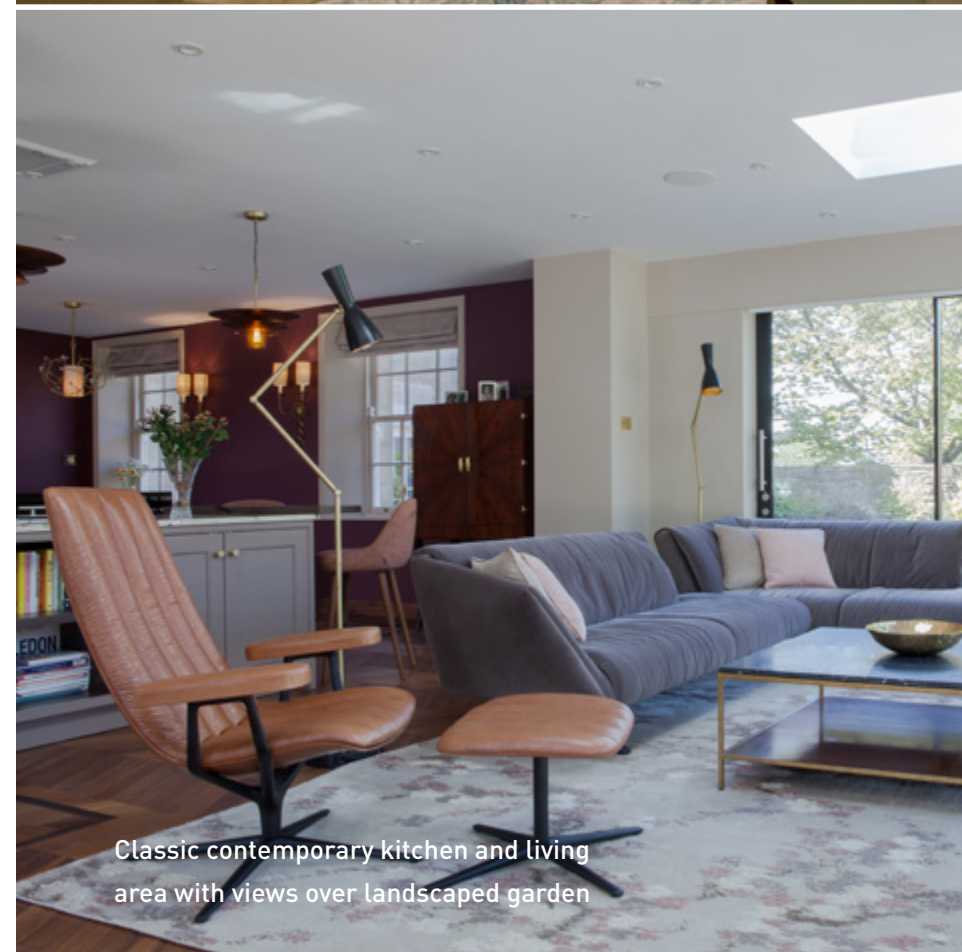
1 full-time project manager – driven and equipped to hit budgets, timescales and quality levels

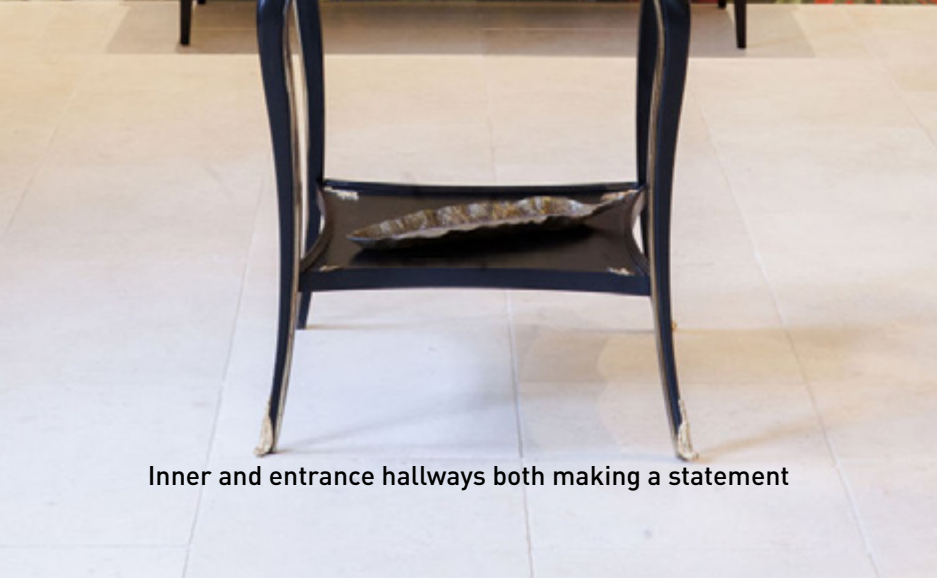
2 FF&E experts – as we specified and procured all elements in all of the rooms, our team liaised with suppliers to confirm, order, arrange delivery and install

440 suppliers used – all from our trusted and experienced network we've built since 2009

9 trades – from joiners to tilers, kitchen companies to specialist stone masons, spa installers to security technology, we worked with a huge array of specialists to get the job done – we're still friends with all of them

18 the number of months it took from initial briefing to full handover





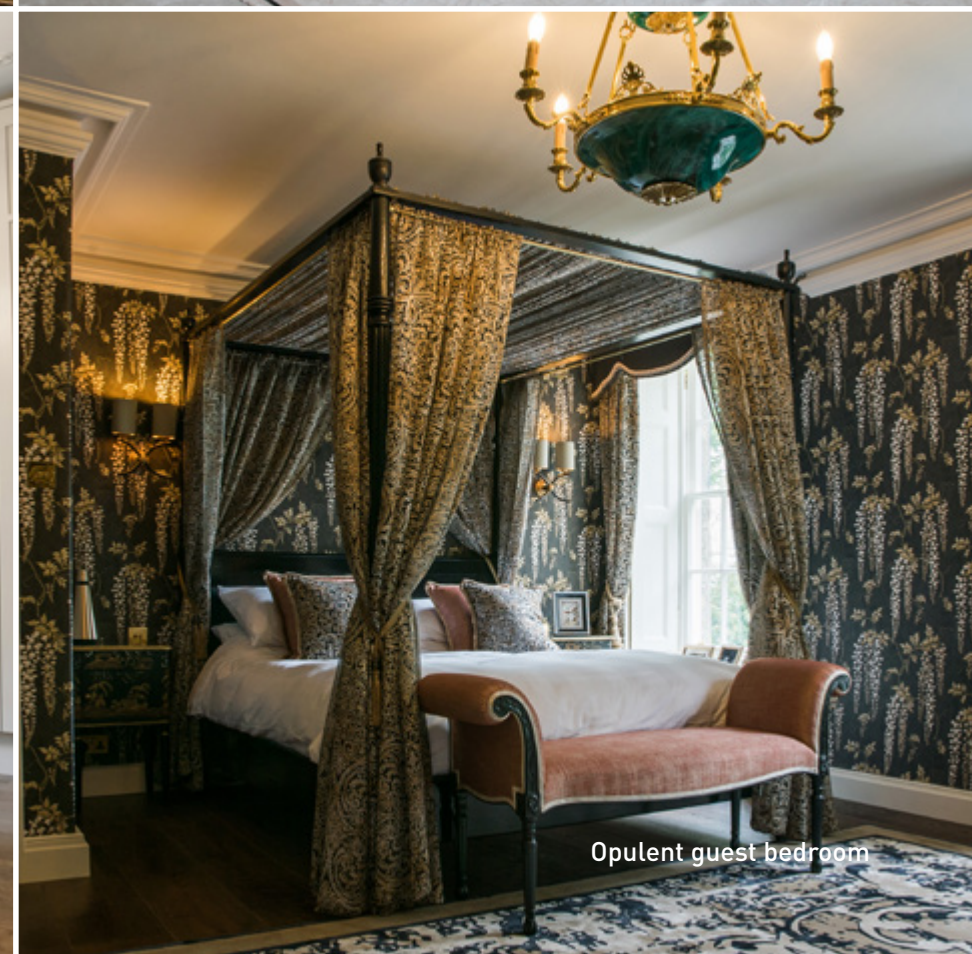
Inner and entrance hallways both making a statement



Feminine dressing room



Calm and luxurious master bedroom



Opulent guest bedroom



Internal swimming pool and spa wing with bespoke staircase leading from Master bedroom

WHY USE ETONS OF BATH?

- Classic-contemporary design aesthetic that is sympathetic to period properties
- Specific knowledge, experience and expertise in Georgian and Regency interiors
- Experience of delivering stunning interiors for large hotels and private residences alike
- Author of blog 'Georgian Regency Interiors' – short-listed for the Amara Blog Awards
- Our expertise has led to a regular column for The Listed Property Owners' Club magazine
- A wide range of specialist suppliers to meet interior tastes from classic to contemporary
- Well-rounded experience in designing and then delivering projects of varying sizes and budgets
- Friendly and dynamic team with a desire and skillset to create stunning interiors
- National coverage with Studio based in Georgian heritage city of Bath





Drawing Room | Georgian Country House

108 Walcot Street Bath BA1 5BG

T 01225 639002

www.etonsofbath.com